

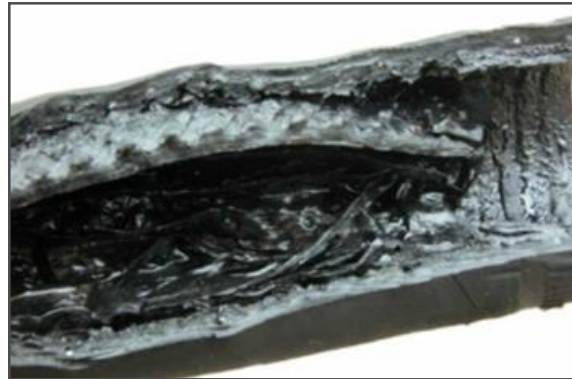
ENI Deepwater Jumpers

Charles Tavner
Magma Global



CHALLENGE

Traditional jumper solutions have a limited life in sour gas conditions



SOLUTION

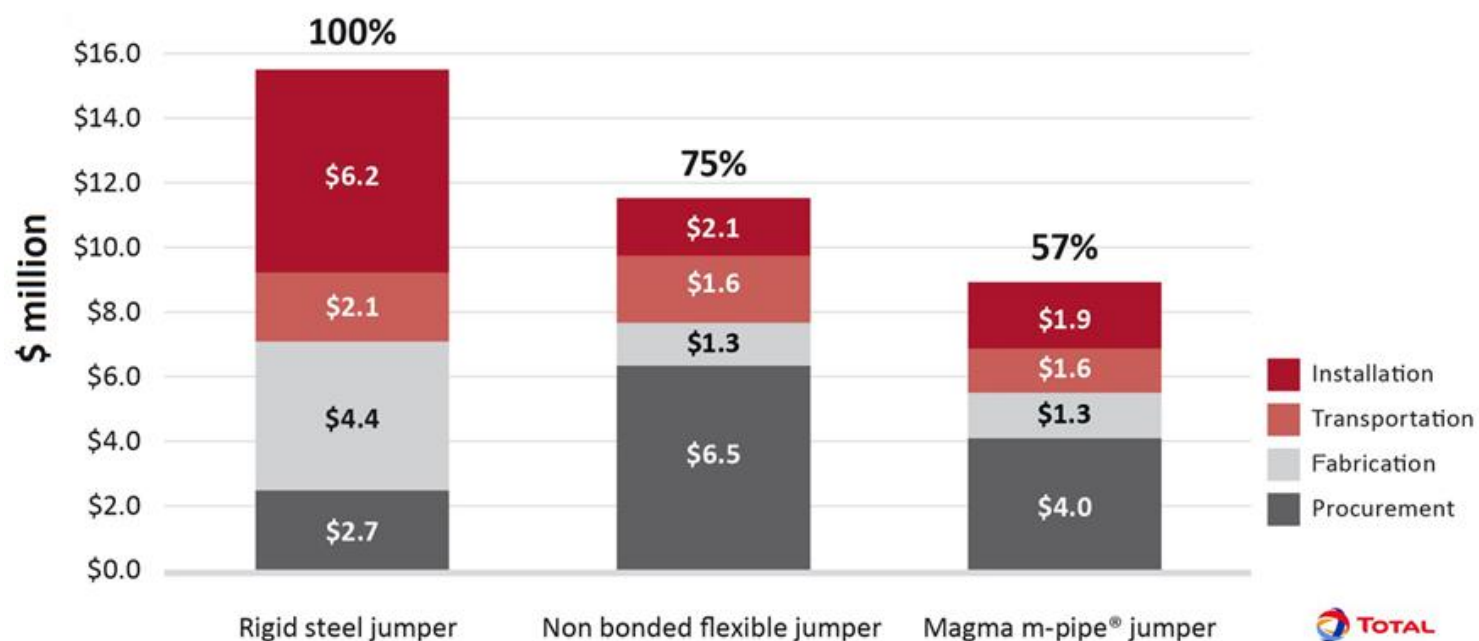
m-pipe[®] offers a robust , low cost, rapid alternative



- Lowest fully installed cost
- Rapid delivery
- Simple installation
- DNVGL-RP-F119 qualified
- 25 year life in 12,000ppm H₂S & 850m water

COST

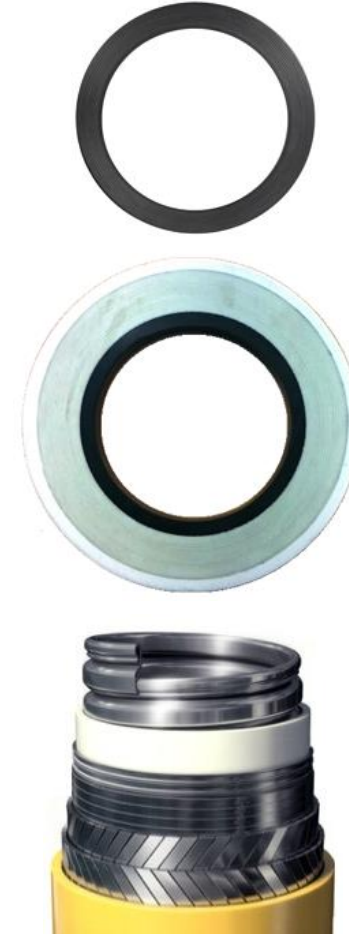
Research shows m-pipe® repeatably delivers fully installed cost savings



COST

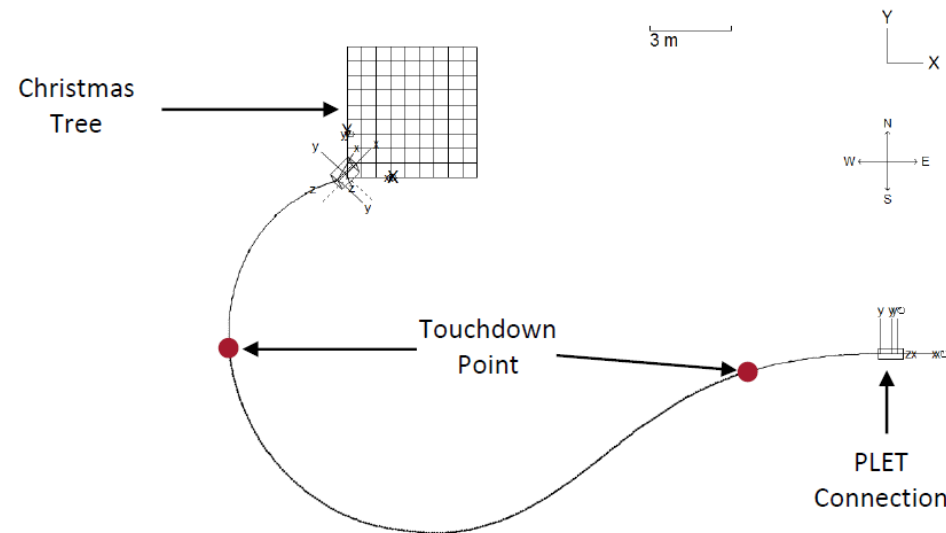
One standard m-pipe[®] product is lower cost

- Stronger materials means thinner walls, less material and lower costs
- Better manufacturing and test data means tighter coefficient of variation, thinner wall and lower cost
- Integrated supply chain with Victrex means less wastage, volume discounts and lowest cost



INSTALLATION

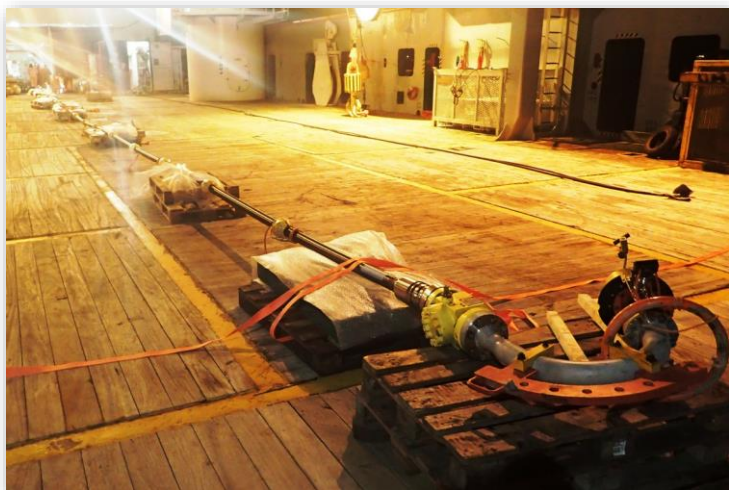
Robust lightweight m-pipe[®] offers simple rapid installation



- Firenze FPSO in Adriatic
- Tie between XT to PLET
- 850m water depth

INSTALLATION

Robust lightweight m-pipe® offers simple rapid installation



- FMC connectors integrated onto goosenecks
- No bend restrictors required
- Clamped ballast to ensure stability

INSTALLATION

Robust lightweight m-pipe[®] offers simple rapid installation



- No basket or spreader beam required
- Main and auxiliary cranes lowered pipe through the water column to connect first pipe end to PLET
- Second end of pipe manoeuvred into place with ROV assistance



RISK

m-pipe® delivered and qualified for hydrocarbon, water and gas service



subsea 7



OCEANEERING®



MCEDD
DEEPWATER DEVELOPMENT

OPERATOR VIEW



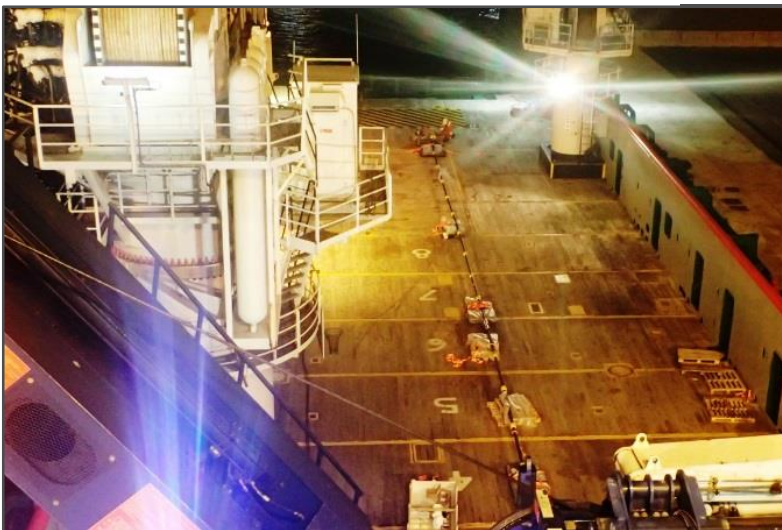
“Magma’s m-pipe® was chosen because it performs strongly in sour conditions and has superior collapse resistance capabilities in deepwater applications.”

“The financial case, lead time and ease of installation using m-pipe® TCP stacked up well compared to other flexible alternatives.”

Marco Serricchio - Production Manager, ENI



CONTRACTOR VIEW



“The light weight of m-pipe® made the deployment surprisingly easy using our vessel cranes, with trouble-free and fast connection to the two deepwater wells.”

Patrick Belenfant
SVP Subsea Services, Bourbon



CONCLUSION



- ENI endorsed lowest cost
- 7 week delivery
- Bourbon endorsed installation

MAGMA GLOBAL

**United Kingdom:**

Magma House, Trafalgar Wharf, Hamilton Road,
Portsmouth, Hampshire PO6 4PX

United States:

800 Town and Country Boulevard, Suite 300,
Houston, Texas 77024

Saudi Arabia:

STARC, Al-Subeaei Towers – 15th Floor,
PO Box 3831, Al Khobar 31952

Malaysia:

IO Setia Ventures, Taman Ostia Bangi,
43650 Bangi Selangor Darul Ehsan

Angola:

Expert World Services, Rua Aires de Menezes,
Malanga-Bairro de Alvalade, Luanda